



Bridge Street, Barrow Upon Soar, Loughborough

Asking Price £239,950





This beautifully restored three-bedroom cottage, dating back approximately 200 years, is positioned in the very heart of Barrow upon Soar on Bridge Street. Combining timeless character with thoughtful modern updates, the home offers charming interiors, a south-facing garden and an enviable village-centre setting just moments from local amenities and countryside walks.



Living Spaces & Kitchen

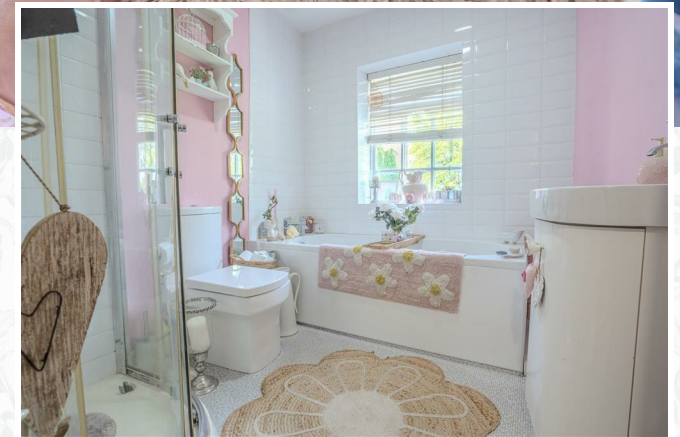
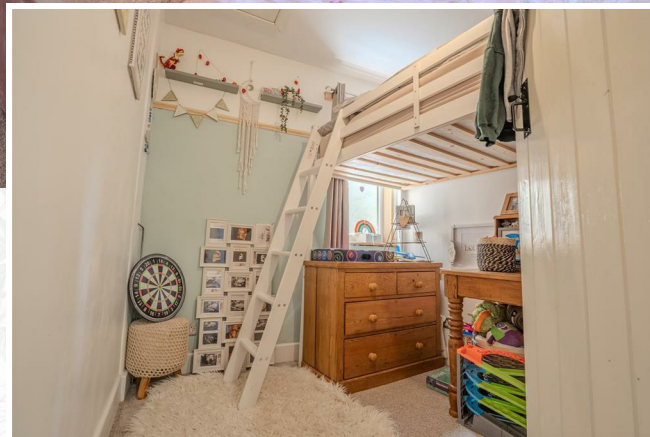
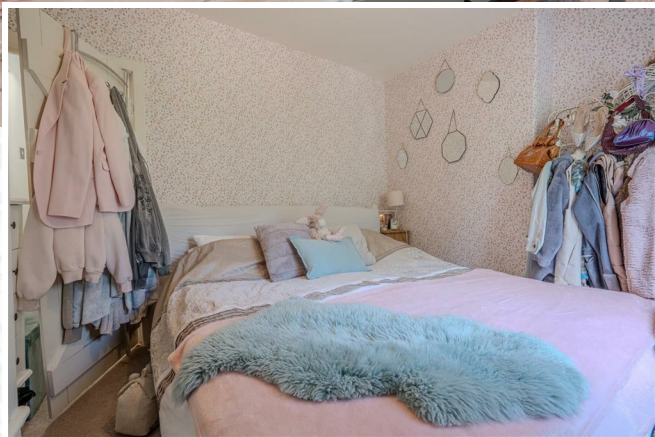
Upon entering, you are welcomed into the lounge, extending the full depth of the property. Solid oak flooring runs underfoot, while a multi-fuel log burner forms a cosy focal point. A fully glazed door enhances the connection to the garden, allowing natural light to flow through the space. The staircase to the first floor is neatly positioned within the lounge, maintaining a seamless layout.

The stunning kitchen-diner that spans the full depth of the property, creating a sociable and light-filled heart to the home. Fitted with modern units, the kitchen includes a ceramic hob, electric oven and slimline dishwasher, all complemented by tiled flooring and a rear door leading directly out to the garden.



HOME





Bedrooms & Bathroom

Upstairs, the principal bedroom is a spacious and characterful room, benefitting from original sliding windows to the front and additional natural light from a side window. There is space for furnishings, along with a useful storage area. The second bedroom is a comfortable double, also featuring original sliding windows and a pleasant front aspect, making it ideal as a guest room or home office. The third bedroom is a tidy single room that is ideal for a single bedroom, office space or nursery. A ceiling hatch with pull-down ladder provides access to a fully boarded loft with lighting, offering excellent additional storage.

The bathroom has been modernised with a full suite, comprising a bath, separate shower, WC and wash hand basin. A chrome ladder radiator adds a contemporary finish to this well-appointed space.



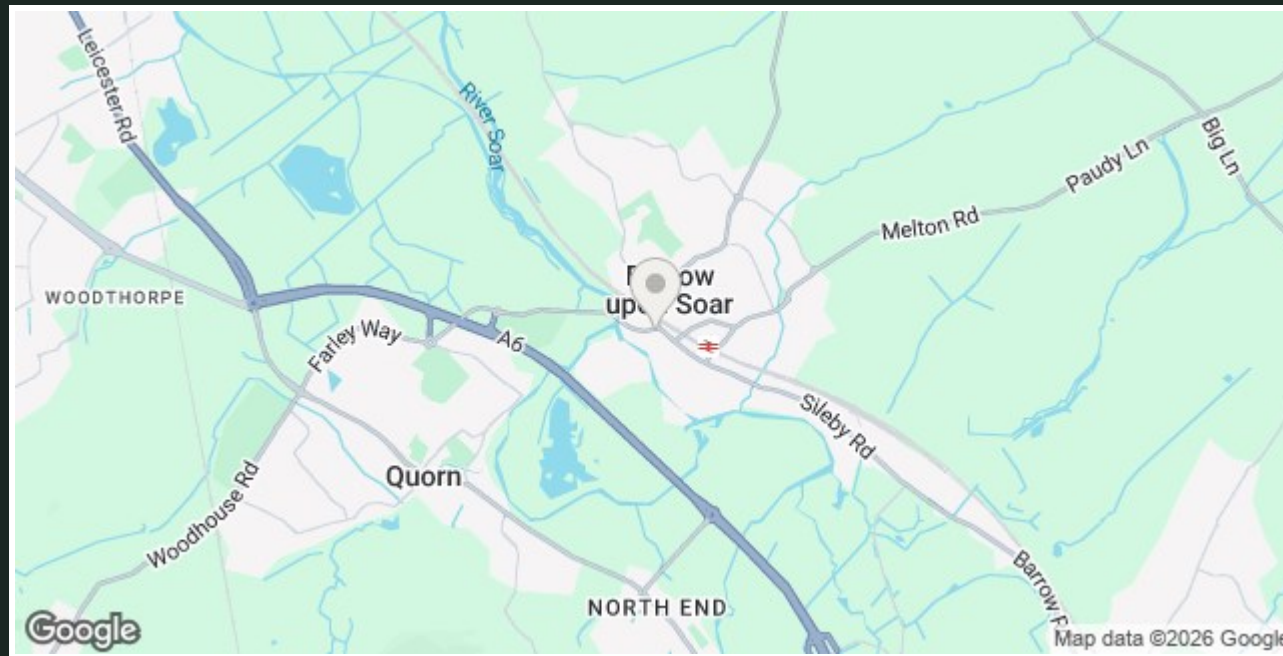


Outdoor Lifestyle

Externally, the property enjoys a delightful south-facing cottage garden, designed to offer both privacy and relaxation. A patio seating area provides the perfect spot for outdoor dining, while a well-kept lawn and established planting create a peaceful setting. A shed offers useful storage, and gated side access adds convenience.

How to find Bridge Street

Situated on Bridge Street, this home is right at the centre of Barrow upon Soar, placing shops, cafés, pubs and everyday amenities quite literally on your doorstep. The village also benefits from a train station with direct links to Leicester and Loughborough, alongside easy access to the A6 for commuters. Surrounded by scenic countryside and riverside walks, the location perfectly blends village charm with connectivity.



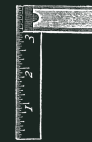
3



1



1



766.00 sq ft

Charwood: B | Tenure: Freehold

Energy Efficiency Rating		Environmental Impact (CO ₂) Rating			
	Current	Potential		Current	Potential
Very energy efficient - lower running costs			Very environmentally friendly - lower CO ₂ emissions		
(92 plus) A			(92 plus) A		
(81-91) B			(81-91) B		
(69-80) C			(69-80) C		
(55-68) D			(55-68) D		
(39-54) E			(39-54) E		
(21-38) F			(21-38) F		
(1-20) G			(1-20) G		
Not energy efficient - higher running costs			Not environmentally friendly - higher CO ₂ emissions		
England & Wales	EU Directive 2002/91/EC		England & Wales	EU Directive 2002/91/EC	